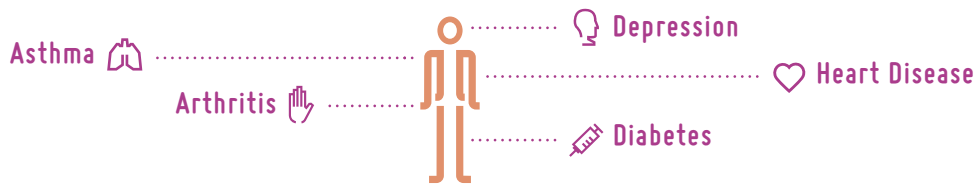


THE IMPORTANCE OF
 INVESTING IN CARE FOR PEOPLE WITH
Multiple Chronic Conditions

COMMON CHRONIC CONDITIONS



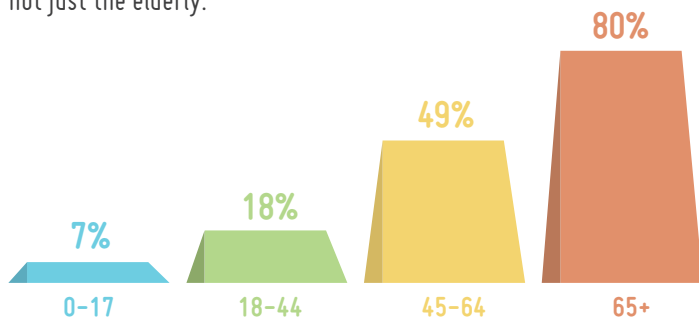
Patients with multiple chronic conditions (MCC) have two or more chronic illnesses at the same time. Chronic conditions include both physical and behavioral health conditions that last a year or more, and require ongoing medical care and /or limit physical abilities.

MCC IS A LARGE & GROWING PROBLEM



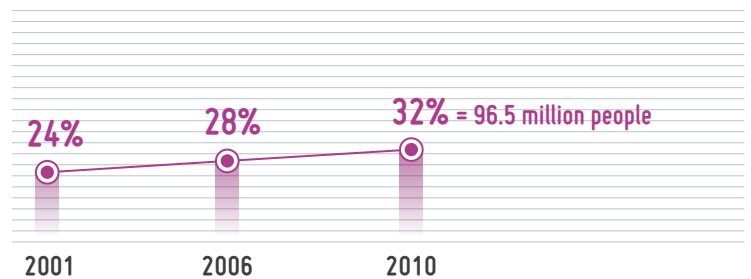
Almost **one in three** Americans lives with MCC.

The prevalence of MCC increases with age, however this problem affects a large number of working aged Americans, not just the elderly.



% OF US POPULATION WITH MCC BY AGE

The problem is growing and will continue to grow as the population ages.



% OF US POPULATION WITH MCC OVER TIME

THE PROBLEM IS COSTLY



71¢ of every dollar of US healthcare spending goes to treating people with MCC.



93¢ of every dollar of Medicare expenditure goes to treating people with MCC.

Out of pocket healthcare spending increases for patients with a greater number of chronic conditions.



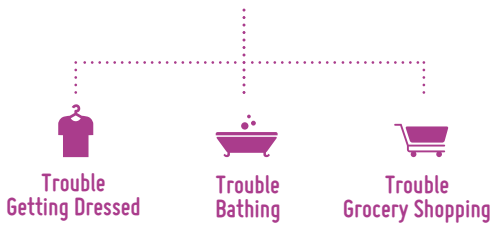
AVERAGE ANNUAL OUT OF POCKET EXPENDITURES

IMPACT OF MCC ON PATIENTS & FAMILIES



45%

of people living with MCC have activity limitations such as...

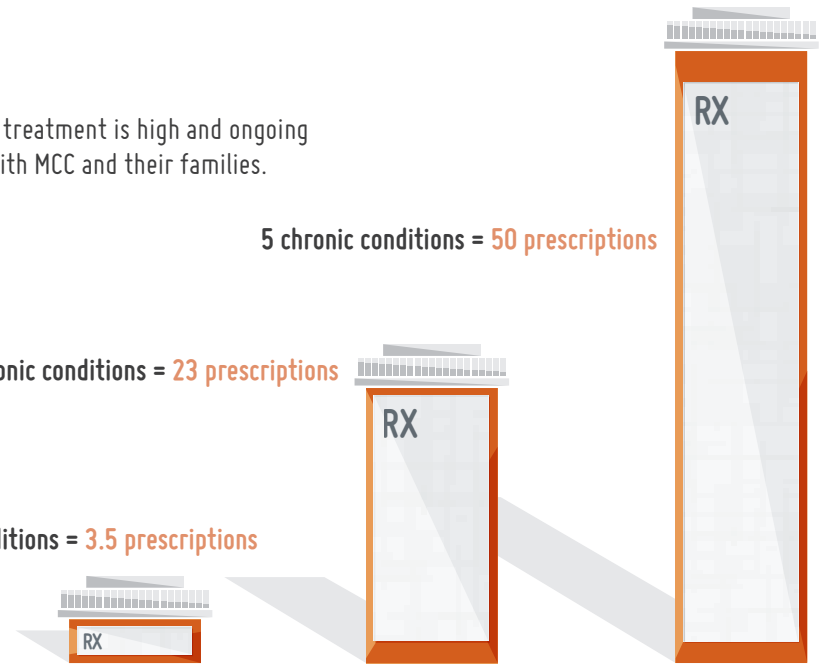


The burden of treatment is high and ongoing for patients with MCC and their families.

5 chronic conditions = 50 prescriptions

3 chronic conditions = 23 prescriptions

0 chronic conditions = 3.5 prescriptions



AVERAGE NUMBER OF PRESCRIPTIONS PER YEAR (new + refilled)

To address the growing problem of MCC, the US healthcare system must transform from a disease-specific model to a patient-centered one.

The Agency for Healthcare Research and Quality is investing in MCC initiatives, but everyone's help is needed!



TO LEARN MORE ABOUT WORK ADDRESSING MCC, PLEASE VISIT:

AHRQ Multiple Chronic Conditions Research Network

» General Information: <http://www.ahrq.gov/research/mccrn.htm>

» Data Archive: <http://www.icpsr.umich.edu/AHRQMCC/>

HHS Initiative on Multiple Chronic Conditions

<http://www.hhs.gov/ash/initiatives/mcc/>

SOURCES

Analysis of 2010 Medical Expenditure Panel Survey Data. (2013) Abt Associates | Anderson G. Chronic Care: Making the Case for Ongoing Care. (2010). Robert Wood Johnson Foundation | Chronic Conditions among Medicare Beneficiaries Chartbook, 2012 Edition. (2012). Center for Medicare and Medicaid Services | 2010 Census Data, U.S. Census.



Agency for Healthcare Research and Quality
Advancing Excellence in Health Care