



Surveys on Patient Safety Culture™

Findings from the 2022 Hospital Survey 2.0 Database

This overview summarizes survey findings from the 2022 Hospital Survey on Patient Safety Culture 2.0 Database.

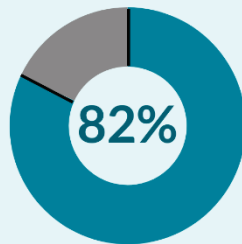


206,410 providers and staff respondents



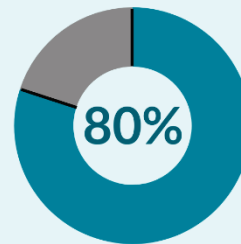
Areas of strength for most hospitals

Teamwork



of respondents “strongly agreed” or “agreed” that staff work together as an effective team, help each other during busy times, and are respectful.

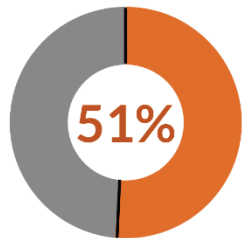
Supervisor, Manager, or Clinical Leader Support for Patient Safety



of respondents “strongly agreed” or “agreed” that supervisors, managers, or clinical leaders consider staff suggestions for improving patient safety, do not encourage shortcuts, and address patient safety concerns.

Area of potential improvement for most hospitals

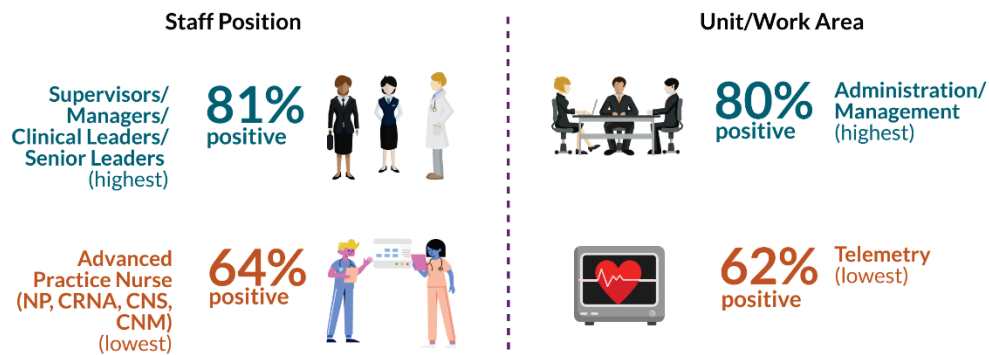
Staffing and Work Pace



of respondents indicated there are enough staff to handle the workload, staff work appropriate hours and do not feel rushed, and there is appropriate reliance on temporary, float, or PRN staff.

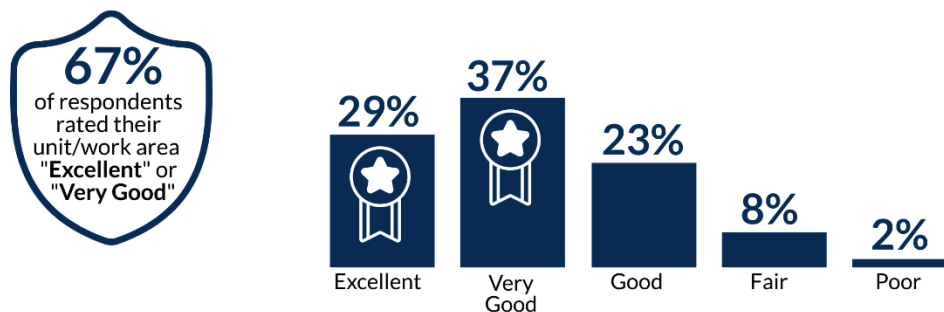
Other findings

» Highest and lowest composite measure average score by staff position and unit/work area



Overall patient safety rating

» Average patient safety rating of unit/work area



Notes: 1) Percentages indicate the database average percent response for each response option; 2) The percent positive displayed might not equal the sum of the separate response option percentages due to rounding; 3) All five percentages might not add to 100 percent due to rounding.

Trending results

» Trending results for 56 hospitals that submitted to both the 2021 and 2022 databases



The **Staffing and Work Pace** composite measure had the largest change in scores from the previous to the most recent database (-6% change).



The **Hospital Management Support for Patient Safety** composite measure had the second largest change in scores from the previous to the most recent database (-5% change).

What's next? Action planning for improvement

The *Action Planning Tool for the AHRQ Surveys on Patient Safety Culture* provides step-by-step guidance on how to develop an action plan to improve patient safety culture, available at www.ahrq.gov/sops/resources/planning-tool/index.html

To view the full report: <https://www.ahrq.gov/sops/databases/hospital/index.html>

For more information on SOPS Hospital Database submission:
<https://www.ahrq.gov/sops/databases/hospital/databases/submission.html>